



FROUDS BRIDGE  
M A R I N A

---

## Quidlibet

45' Semi Trad

2014 - Nick Thorpe

£59,950 ONO



Quidlibet is a 45' Semi Trad stern built by Nick Thorpe in 2014 and owner fitted out. Quidlibet has been fitted out to a lovely standard and offers lots of practical space, storage and high quality fixtures and fittings. Sleep up to 4 Quidlibet will make a great vessel for the extended cruise and the occasional guests.



## Boat Specification

Year of Construction	2014
Hull Plating Specification	Steel 10/6/5/4
Keel	Flat
No. Berths	2 +2

## History of Vessel / Maintenance

Boat Safety Certificate Expiry	June 2026
Recent Survey	N/A
Latest Hull blacking	Aug 2023 - 2 pack epoxy
Anodes	Aug 2023

### Boat Description

As mentioned Quidlibet is a 45' semi trad stern built by Nick Thorpe is 2014 and fitted out by the current owner. The boat has been finished well and in a great turnkey state. Externally, Quidlibet has been finished a single dark blue gloss paint which you can tell from the pictures has been well maintained. Internally has been finished with white paneling and a T&G style roof giving the internal cabin space a light and bright feel.

Starting at the Stern deck you step down into the back cabin which has been built with both storage and comfort in mind. The back space is both a practical room to fettle with the engine, batteries or alike as well as a comfortable, private and spacious king size fold down bed. When the bed is down there is loads of room underneath to store things such as bikes or boxes.

Moving forward into the bathroom you will notice straight away that there a full-size bath with shower overhead. Usually baths are impractical, however the owner has thought of this with a 900 litre water tank and 90l calorifier making a bath on a boat very possible indeed. There is still ample room for the sink and toilet which given the size of the boat is proportionally huge.

Next you will come to the galley kitchen which has plenty of storage room which intern creates a large amount of countertop. The galley gives you all you need for cruising with a practical induction hob and microwave, as well as the full sized under counter fridge and washing machine. Slightly further forward we come to another set of shorter storage units with the top doubling up to become either bench seating on two single beds. There really is ample storage onboard.



Finally, we move to the Saloon which gives a nice little space to sit down for an evening meal around the round table whilst looking out the beautiful front doors and well deck.

## Engine Specification

Engine Make	Barrus Shire 45Hp
Engine Hours	??
Bow Thruster	N/A
Diesel Tank Capacity	175 litres
Additional Systems	240 amp domestic alternator.

## Water & Heating Systems

Source of Hot Water	Calorifier, Eberspacer
Central Heating	Eberspacer
Solid Fuel Stove	No
Water Tank Capacity	900 litres
Water Tank Material	Stainless Steel

## Electrical System and Components

12-Volt System/Lighting	Standard + LED lights
12-Volt System/Power	Standard
240 Volt	Shorepower
Inverter	3kW Victron inverter/charger
Charger	Victorn charger
Batteries	4 x120Ah domestic, 1 x starter
Other systems	Solar Panels + MPPT charge controller

## Bathroom Specification

---



Quidlibet 45' Semi Trad

---

Type of Toilet	Jasco pump out
Shower/Bath	Full sized bath with overhead shower
Handbasin	Ceramic and vanity unit
Additional Information	90 litre calorifier

## Kitchen Specification

Cooker	N/A
Hob	4 Ring Logik induction Hob
Fridge	Liebherr under counter fridge
Gas	2 x 13kg
Additional Systems	Hoover Washer/Dryer



## Additional Photos



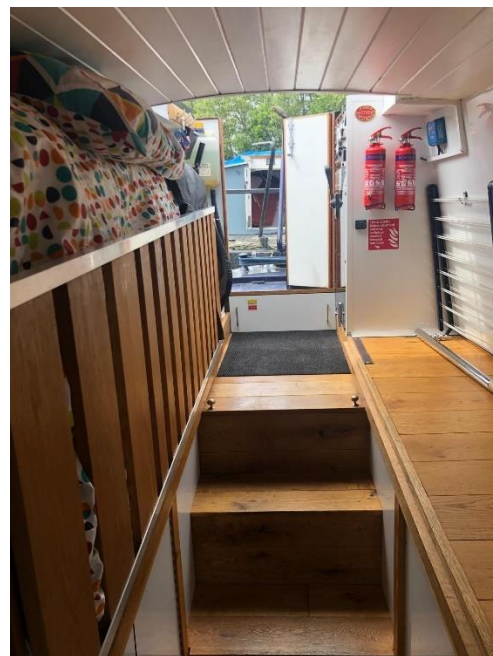
▲ Semi trad stern



▲ Control Panel



▲ Bedroom facing fore



▲ Bedroom facing aft



▲ Bath



▲ Bath with overhead shower



▲ Sink



▲ Pump out toilet and towel rail



▲ Galley facing fore



▲ Galley facing aft



Saloon facing fore



Saloon facing aft



Quidlibet 45' Semi Trad



Saloon facing forward



Saloon facing aft



**NOTE:**

*In this transaction we are acting as Brokers only. Whilst every care has been taken in their preparation, the correctness of these particulars is not guaranteed. The particulars are intended only as a guide and they do not constitute a term of any contract. A prospective buyer is strongly advised to check the particulars and where appropriate to have the vessel fully surveyed and inspected, water trialled and opened up".*