

# WASING

1759

---

FROUDS BRIDGE MARINA

## Moonwake

55' Semi Trad Stern - Brand New

Reverse Layout

Stroud Innovations

£139,950ono



Moonwake is a 55ft Reverse Layout Semi Trad stern fitted out by Stroud Innovations in 2024/5 and will fully commissioned and ready to sail away in April. This boat has been designed and finished with boating in mind and to the highest standards. The layout is both practical and stylish with a light airy feel thanks to the extensive experience of this boat fit-out company. Moonwake has all the mod cons, including a very efficient 24v lithium domestic system, perfect for a comfortable extended cruise or as a continuous cruiser.

Moonwake - 55ft Semi Trad Stern

## Boat Specification

Year of Construction	2024
Hull Plating Specification	Steel 10/6/4
Keel	Flat
No. Berths	2

## History of Vessel / Maintenance

Boat Safety Certificate Expiry	April 2029
Recent Survey	N/A
Latest Hull blacking	Feb 2025
Anodes	Feb 2025

## Boat Description

Moonwake is currently 80% complete, with commissioning, final carpentry, re blacked, and paint touch up/polish due for completion April 2025. Early viewing is advised

Moonwake is a 55ft Reverse Layout Cruiser semi trad fitted out by Stroud Innovations in 2024/5. This boat has been finished to the highest of standards meeting all the latest RCD best practices with everything handmade and fitted for this boat.

The shell was made by ABC (Boston) and provides a generous semi-trade stern deck and storage. The hull also has 2 x stern gas lockers, a large sliding hatch, pronounced handrails along the length as well as a good sized bow deck with 2 x storage/seat lockers and a large bow locker. The shell has near vertical sides providing giving the added benefit of a wider and larger feel in the cabin (6'5 head room).

Externally Moonwake has been hand painted by RDT marine in 2024 using the using Symphony Narrowboat paints. This boat has a lovely smooth finish with a classic Morris Minor grey on the side panels, a cream anti-slip roof and black gunwales and deck.

Internally Moonwake has been fitted generously with all carpentry handmade and bespoke to fit this boat. The flooring has been finished in a herring bone style dark wood laminate, acoustic deadening floor that beautifully complements the light grey T&G under the gunwales. The cabin sides have been finished with white panels and oak trims to give a light bright feel in the cabin space. The cupboards and bulkhead walls have been finished in a deep green finish bringing continuity and warmth. The paint used is a hard-wearing acrylic paint which allows for easy cleaning as well as bringing longevity.

Moonwake - 55ft Semi Trad Stern

---

As you step down through the rear hatch you will immediately notice the light, bright feel of the boat thanks to the large hopper style windows in the saloon and galley. On the port side are the switch panels, behind which you will find the inverter/charger, galvanic isolator, solar charge controller, all the wiring which has easy access and has been wired to all the latest RCR best practices. Moonwake has been fitted with the latest in lithium technology and controllers which can be found in the stern cupboards. On the starboard side is a generous side cupboard, ideal for storing some of the cruising essentials.

The first space is the Galley which has been fitted with painted units, 27mm solid oak worktop and quality fittings giving this a stylish finish, it is also a well thought out practical space with the 2 burner hob, a built in oven/grill and a large undercounter fridge. There is ample worktop space thanks to the versatile breakfast bar which has the bonus of keeping the space light and open. Between the galley and saloon is a side hatch which allows extra light and ventilation to the space.

The Saloon has been designed to be clean and open and can easily accommodate a 3 seater sofa/bed or 2 large lazy boy style chairs. There is a full height shelving unit and a built in TV unit all made from oak. The Saloon has 12v and 240v sockets and a TV aerial point mounted on the wall. There is space to have a small wood burner in the corner.

The shower room is further forward and utilizes the full width of the boat. This allows for a full-sized quadrant shower which has been fitted into the gunwales giving you more room than usual with the added bonus of a storage shelf internally. This space also comprises of a large storage unit, finished in the same style as the galley, which has been fitted with a round ceramic sink and stainless-steel mixer tap. A Thetford cassette toilet has been fitted in this space, with a side loading of the cassette allows for easy emptying.

The bedroom has been well considered to not only provide the storage required but also gives an open, cosy space to rest in. The bedroom also has a side hatch on the starboard side for extra light and ventilation. The handmade cupboard and drawer space give you plenty of storage, with additional storage underneath the bed in the form of two large drawers and further large capacity space for the items you don't immediately need to hand. The steps leading up and out through the handmade solid oak double doors also provide much needed storage but provide easy access to the water pump and stop cock if required.

## Engine Specification

Engine Make	Barrus Shire
Engine Hours	55
Bow Thruster	N/A
Diesel Tank Capacity	275 litres - Approx
Additional Systems	

## Water & Heating Systems

Moonwake - 55ft Semi Trad Stern

Source of Hot Water	Calorifier, immersion, Webasto
Central Heating	Webasto - Heatmiser neoStat
Solid Fuel Stove	N/A
Water Tank Capacity	500 litres
Water Tank Material	Polypropylene
Water Pump	Jabsco 11lpm water pump fitted with accumulator and filter. Water Level Indicator

## Electrical System and Components

24-Volt System/Lighting	Standard + LED lights
24-Volt System/Power	Standard
240 Volt	Shorepower
Inverter	Victron 24v 3kW0 Multiplus with Power Assist
Solar Panel	Yes - 2 x 360w Victron Panels + Victron MPPT 100/50 Smart Solar Charge Controller
Batteries	4 domestic, 1 starter
Other systems	Galvanic Isolator, Victron Smart Battery Monitor with Bluetooth Smart Phone Connect

## Bathroom Specification

Type of Toilet	Thetford C403 Cassette Toilet
Shower/Bath	Large Quadrant Shower
Handbasin	Ceramic Bowl with mixer tap
Additional Information	Whale 220 Gulper Shower pump

## Kitchen Specification

Cooker	Thetford Duplex Oven with Grill
Hob	Thetford Topline 922 Gas Hob
Fridge	Indel B Cruise 85l Fridge with Freezer Compartment.
Gas	2 x 13kg
Additional Systems	Stainless steel sink with mixer tap

Moonwake - 55ft Semi Trad Stern

Additional Photos



▲ Galley facing fore



▲ Galley facing aft



▲ Galley facing aft



▲ Galley facing aft

## Moonwake - 55ft Semi Trad Stern

---



▲ Saloon facing fore



▲ Saloon shelving



▲ Saloon facing aft



▲ Saloon facing aft

Moonwake - 55ft Semi Trad Stern

---



▲ Shower



▲ Shower room facing fore



▲ Sink



▲ Shower room facing aft

Moonwake - 55ft Semi Trad Stern



▲ Bedroom facing fore



Bedroom facing fore



▲ Bedroom facing aft

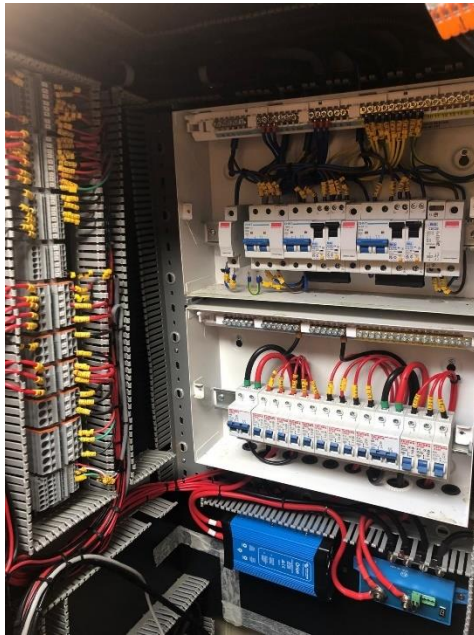


▲ Bow deck doors



## Moonwake - 55ft Semi Trad Stern

---



▲ Wiring in aft cupboard



▲ Roof with 3 x solar panel to be fitted

---

### NOTE:

*In this transaction we are acting as Brokers only. Whilst every care has been taken in their preparation, the correctness of these particulars is not guaranteed. The particulars are intended only as a guide and they do not constitute a term of any contract. A prospective buyer is strongly advised to check the particulars and where appropriate to have the vessel fully surveyed and inspected, water trialled and opened up".*